

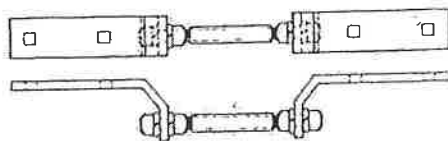
NT 2000

MECHANICAL SWITCHMAN

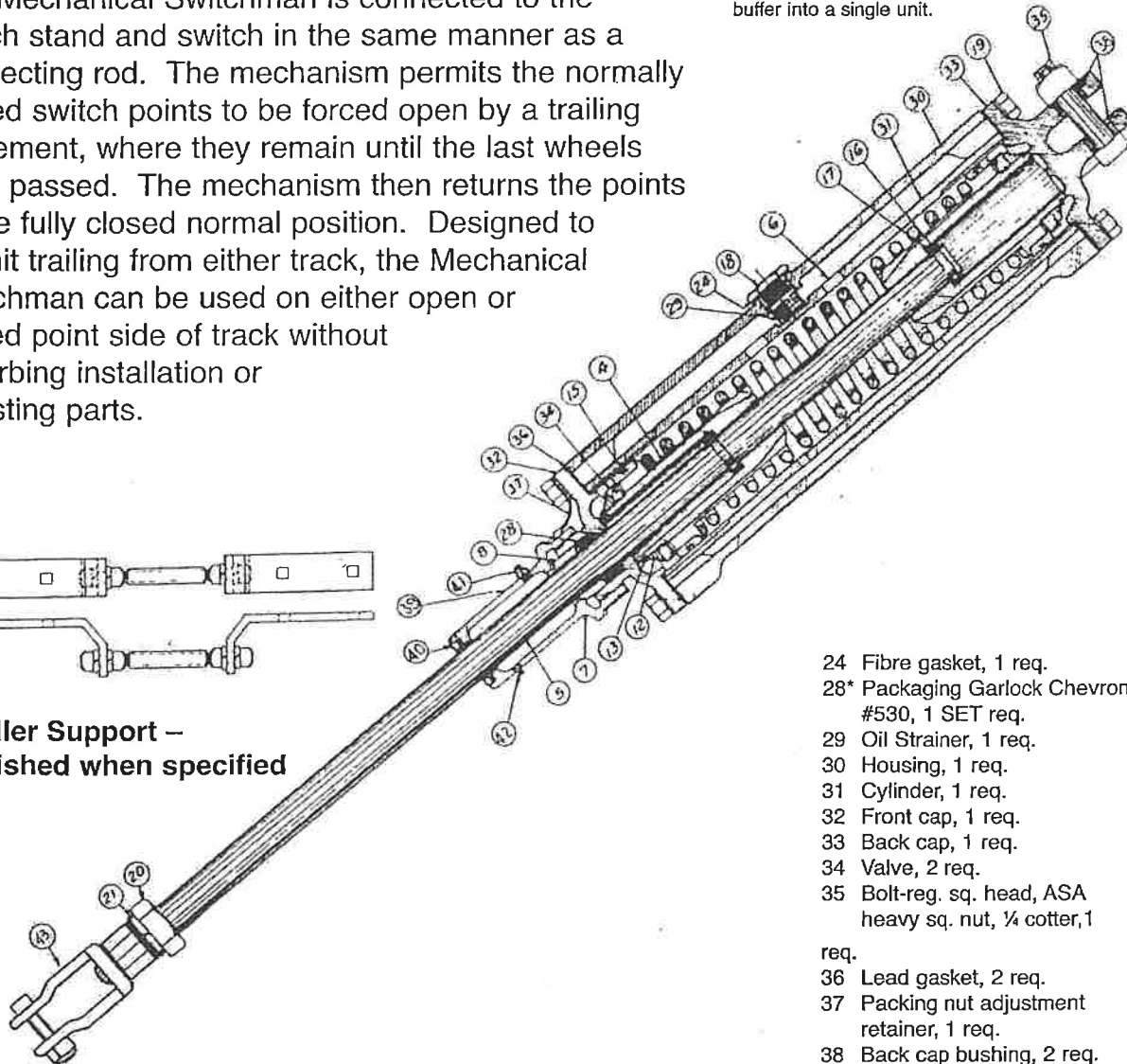
Manufacturing, repairing, and replacement parts.

The Mechanical Switchman is connected to the switch stand and switch in the same manner as a connecting rod. The mechanism permits the normally closed switch points to be forced open by a trailing movement, where they remain until the last wheels have passed. The mechanism then returns the points to the fully closed normal position. Designed to permit trailing from either track, the Mechanical Switchman can be used on either open or closed point side of track without disturbing installation or adjusting parts.

- Can be used on passing sidings, departure ends of yard tracks, ends of double track, and approaches to bridges.
- Switch points can be thrown manually with no resistance.
- Switch points return to their normal position in 10-12 seconds with a 4 3/4" head rod.
- Designed to permit trailing from either track
- Self contained unit combining the spring head and oil buffer into a single unit.



— Roller Support —
Furnished when specified



Detailed Numbers &
Description for
Mechanical Switchman

- 24 Fibre gasket, 1 req.
- 28* Packaging Garlock Chevron #530, 1 SET req.
- 29 Oil Strainer, 1 req.
- 30 Housing, 1 req.
- 31 Cylinder, 1 req.
- 32 Front cap, 1 req.
- 33 Back cap, 1 req.
- 34 Valve, 2 req.
- 35 Bolt-reg. sq. head, ASA heavy sq. nut, 1/4 cotter, 1 req.
- 36 Lead gasket, 2 req.
- 37 Packing nut adjustment retainer, 1 req.
- 38 Back cap bushing, 2 req.
- 39 Pacing nut & rod protector, 1 req.
- 40 Protector oil retainer, 1 req.
- 41 Alemite fitting No. 1610, 1 req.
- 42 1 1/2" brass pipe plug, 1 req.
- 43 Clevis assembly, 1 req.

*1 set—consists of several rings—
1 1/2" ID x 2 1/8" OD x 1 1/2" overall depth.